



Suffolk County Council (20041323)

Babergh and Mid Suffolk District Councils (20041302)

**Joint Local Impact Report Appendix 4: Suffolk
Minerals & Waste Local Plan**

Bramford to Twinstead (EN020002)

Deadline 1

25 September 2023

4 Suffolk Minerals & Waste Local Plan, July 2020



Suffolk Minerals & Waste Local Plan

**Adopted
July
2020**

Contents

1. Executive summary.....	4
2. Introduction.....	6
3. Vision, aims and objectives.....	8
4. General policies.....	10
Policy GP1: Presumption in favour of sustainable development.....	11
Policy GP2: Climate change mitigation and adaptation.....	12
Policy GP3: Spatial strategy.....	14
Policy GP4: General environmental criteria.....	16
5. Minerals policies.....	17
Policy MP1: Provision of land won sand and gravel.....	21
Policy MP2: Proposed sites for sand and gravel extraction.....	22
Policy MP3: Borrow pits.....	23
Policy MP4: Agricultural and public supply reservoirs.....	24
Policy MP5: Cumulative environmental impacts and phasing of workings....	24
Policy MP6: Progressive working and restoration.....	25
Policy MP7: Aftercare.....	26
Policy MP8: Concrete batching plants and asphalt plants.....	26
Policy MP9: Safeguarding of port and rail facilities, and facilities for the manufacture of concrete and asphalt.....	28
Policy MP10: Minerals consultation and safeguarding areas.....	29
6. Waste policies.....	30
Policy WP1: Management of waste (Mt).....	32
Policy WP2: Proposed site for radioactive waste management.....	33
Policy WP3: Existing or designated land-uses potentially suitable for waste development.....	34
Policy WP4: Household waste recycling centres.....	35
Policy WP5: Open air composting.....	36
Policy WP6: In-vessel composting facilities.....	37
Policy WP7: Anaerobic digestion.....	38
Policy WP8: Proposals for recycling or transfer of inert and construction, demolition and excavation waste.....	39
Policy WP9: Waste transfer stations, materials recycling facilities, end of life vehicle facilities and waste electrical and electronic equipment recovery facilities.....	40

Suffolk Minerals & Waste Local Plan, Adopted July 2020

Policy WP10: Residual waste treatment facilities	41
Policy WP11: Approval of sites for disposal of inert waste by landfilling or landraise	42
Policy WP12: Disposal of non-hazardous or hazardous waste by landfilling or landraising	43
Policy WP13: Mining or excavation of landfill waste	44
Policy WP14: Waste water treatment facilities	45
Policy WP15: Transfer, storage, processing & treatment of hazardous waste	46
Policy WP16: Treatment and storage of radioactive waste at Sizewell nuclear power stations.....	47
Policy WP 17: Design of waste management facilities	48
Policy WP18: Safeguarding of waste management sites.....	49
7. Proposed minerals sites.....	50
8. Policy MS1: Barham.....	51
9. Policy MS2: Barnham.....	56
10. Policy MS3: Belstead	63
11. Policy MS4: Cavenham.....	68
12. Policy MS5: Layham	74
13. Policy MS6: Tattingstone	78
14. Policy MS8: Wetherden.....	83
15. Policy MS9: Wherstead.....	87
16. Policy MS10: Worlington	93
17. Proposed waste sites.....	96
18. Policy WS1: Sizewell "A" Nuclear Power Station	98
19. Appendix 1. Acronyms & glossary.....	102
20. Appendix 2. Policy monitoring framework	110
21. Appendix 3: Safeguarding maps	116
Map Pocket. Proposals Map	

- Suffolk Minerals & Waste Local Plan Policy MP10: Minerals consultation and safeguarding areas

Policy MP10: Minerals consultation and safeguarding areas

The County Council will safeguard:

- a) those Minerals Safeguarding Areas located within the Minerals Consultation Areas identified on the Proposals Map from proposed development in excess of five Ha. The County Council will, when consulted by the Local Planning Authority, object to such development unless it can be shown that the sand and gravel present is not of economic value, or not practically or environmentally feasible to extract, or that the mineral will be worked before the development takes place or used within the development;
- b) areas falling within 250m of an existing, planned or potential site allocated in the Plan for sand and gravel extraction. The MPA will advise the Local Planning Authority whether any proposed development might prejudice the future extraction of minerals and should be refused, or whether such development itself might be prejudiced by proposed mineral working.

District and Borough Councils should consult the County Council when a proposal falls within the Minerals Consultation Area as defined on the Proposals Map. The County Council will then refer to Policy MP10 before providing a consultation response. Responsibility for any mitigation required falls on the development that receives planning permission last.

- Suffolk Minerals & Waste Local Plan Policy WP18: Safeguarding of waste management sites

Policy WP18: Safeguarding of waste management sites

The County Council will seek to safeguard existing sites and sites proposed for waste management use as shown on the Proposals & Safeguarding Maps and will object to development proposals that would prevent or prejudice the use of such sites for those purposes unless suitable alternative provision is made.

Development proposals in close proximity to existing sites, should demonstrate that they would not prejudice or be prejudiced by a waste management facility. The safeguarding policy will also apply to any site where planning permission has already been granted.

Where existing business or other use could have a significant adverse effect in any proposed new development, the applicant must provide suitable mitigation before the development is completed so that the existing use is not disadvantaged by new development.

District and Borough Councils should consult the County Council when a potentially conflicting proposal falls within the 250 or 400 metre safeguarding zones as defined in the Appendix 3 Safeguarding Maps. The County Council will then refer to Policies WP18 before providing a consultation response.

- Suffolk Minerals & Waste Local Plan Policy MS5: Layham

Click or press Alt+Down to view suggestions

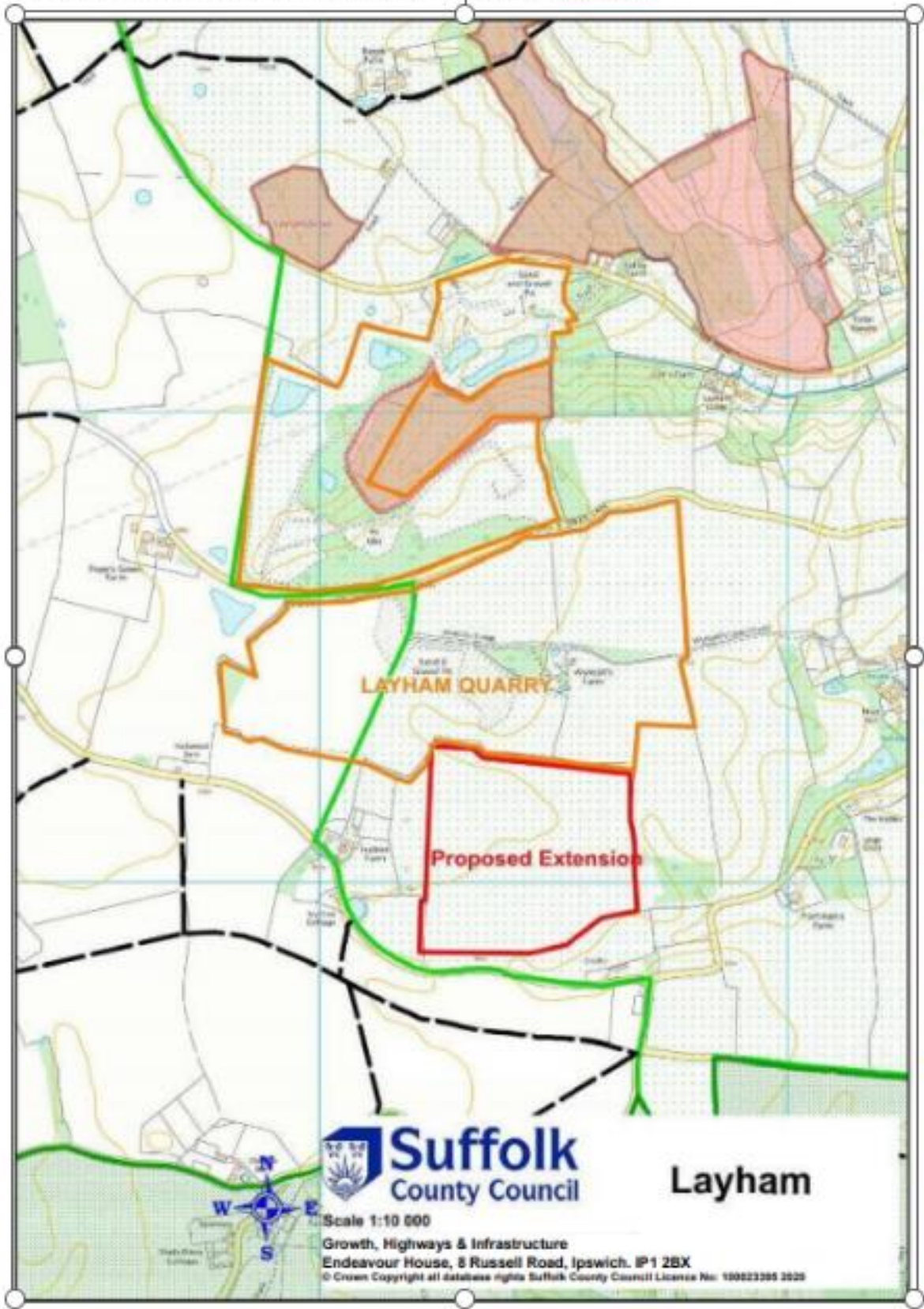
Policy MS5: Layham

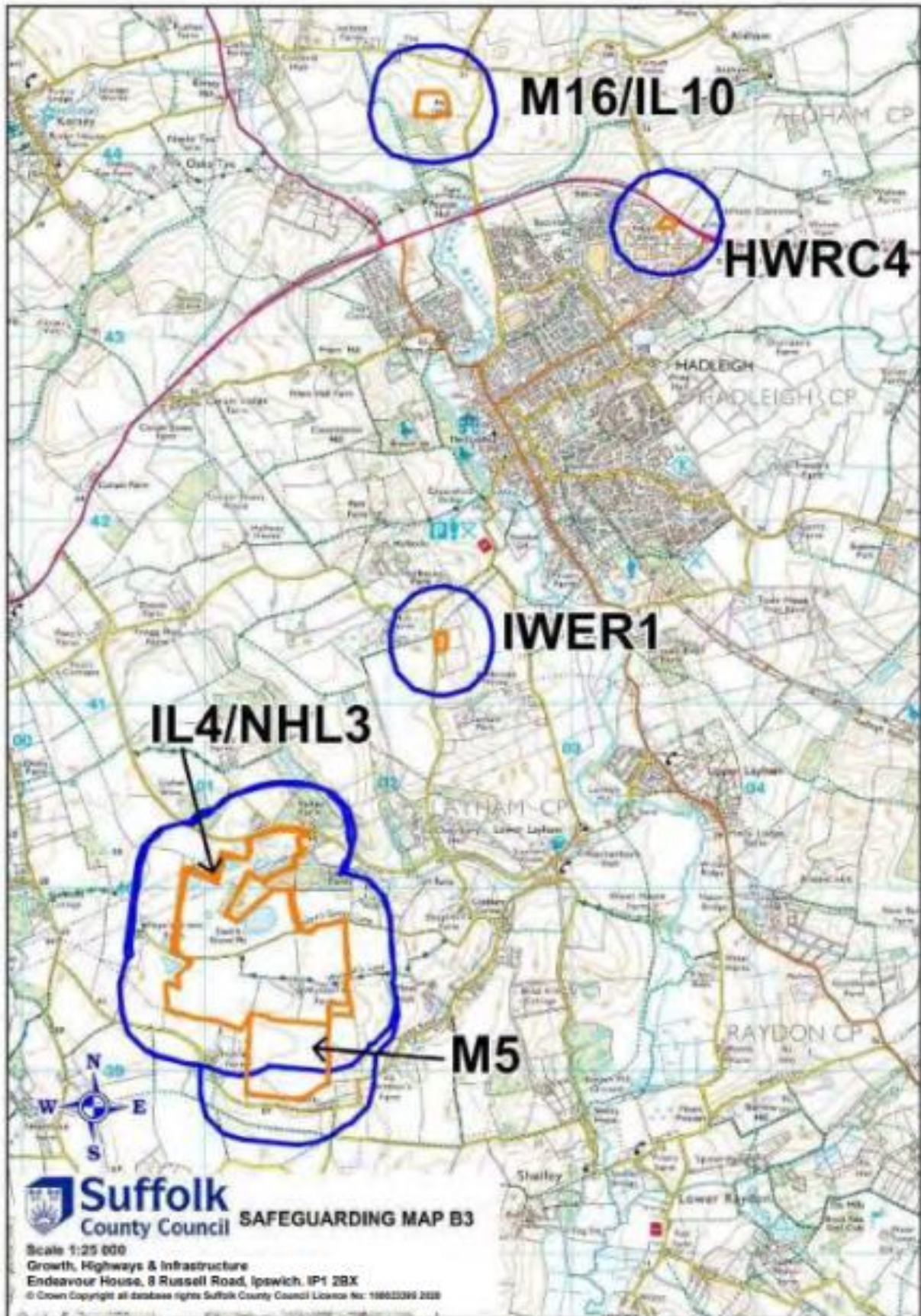
Development will be acceptable so long as the proposals, adequately address the following:

- a) a progressive working and low-level restoration scheme that is sympathetic to the wider Special Landscape Area and to the nearby Area of Outstanding Natural Beauty;
- b) protection of residential amenity;
- c) potential impacts upon nature conservation interest including CWS including ancient woodland, European Protected Species (dormice, otters, bats, and great crested newts), priority species (BAP) and, priority habitats including hedgerows. Appropriate surveys and mitigation will be required;
- d) the provision of an air quality assessment which considers the potential impacts of increased dust and pollutant concentration associated with the extraction and infilling process, the potential for cumulative impacts, and which defines the mitigation and monitoring which will be implemented at the site to minimise the risk at residential properties within 250m;
- e) the provision of measures to mitigate noise, and;
- f) the implications for the underlying groundwater and controlled waters

Proposals must also be generally in accordance with other policies of the development plan including the environmental criteria set out in Policy GP4.

- Suffolk Minerals & Waste Local Plan Policy MS5: Layham





Suffolk Minerals & Waste Local Plan Appendix 3: Safeguarding Maps

